

SALT CREEK QUILTERS GUILD

January 2020

saltcreekqg.org

The Patch Dispatch



CONTENTS

- 2 Programs
Vintage Books
Hospitality
- 3 2020 Quilt Show
- 4 Community Service
Book Review
- 5 Show Entry Form
- 6 Holiday Party Photos

The Salt Creek Quilters Guild (a non-profit organization) meets the second Thursday of the month, September through May at the Hinsdale Community House, 8th and Madison, Hinsdale, IL. Meetings begin at 7:00 pm, but doors open at 6:30 pm. Guests are always welcome. There is a guest fee of \$10.00 when the meeting features a speaker.

Articles, announcements, or photos for the Patch Dispatch should be submitted to me by the 23rd of each month to

urquilting@sbcglobal.net

— Carol Douglas
Patch Dispatch editor



Letter from the President...

Happy New Year.

Dear Guild Members,

The New Year brings hope to everyone for calmness, kindness and fulfillment of dreams.

In these beautiful and unique moments of the year I want to make the days full of best wishes, cheer, and joy.

Our first meeting in the New Year is with Dawn Schuck from Sew Cherished. February brings us Susan Cleveland.

Since there is no formal community service planned, there will be several bags of completed quilt tops ready for tying, machine quilting and binding that you can pick up at the meeting. There will be quilt kits also for piecing that you can work on at home.

I want to give a huge thank you to everyone involved with the wonderful Holiday Party. It was a beautiful evening of friendship.

—Sara Hochhauser

Membership Moments

- May your corners meet.
- May your applique edges turn easily.
- May you always have the right amount of fabric.
- May the pattern directions be accurate.

Note: January is bring-a-friend-to-guild-month.

—Martha Barry and Becky Preston, co-chairs

Programs/Workshops

Our first Program of 2020 is "Sew Cherished" with **Dawn Schuck** and it will be 2 wool workshops. I have her samples but they came the next day after our Party so I was not able to show them to you but they are great. Look her up on our Salt Creek Web site for all of her information. She does outstanding work.

<https://www.youtube.com/watch?v=jdfn--9lc40>

It's not too late to sign up by either calling Terri Karls—630-257-6769 —karls256@att.net or using Pay-Pal.

If you have not signed up for **Susan Cleveland** in February, please do so now. Great teacher and adds a lot of fun to the workshops.

Dresden plate

https://www.youtube.com/watch?v=olEiffX_GqY

Piping Hot Binding

https://www.youtube.com/watch?v=q-rThp7KGRw&list=PLIvW7fjPV5PkuTkLaY431GO_S6g-E8aCF

https://www.youtube.com/watch?v=zMIU2jAd-p4&list=PLIvW7fjPV5PkuTkLaY431GO_S6g-E8aCF

Check the list of out remaining speakers for the year and sign up asap. Invite friends that don't belong to our Guild and have them join in the fun with us.

You can pay with Pay-Pal, Cash, or Check. If all our members would just take ONE CLASS our classes would be full. You can always learn something new in the classes. You can even make new friends with other members.

Please call me at 630-257-6769 or *karls256@att.net* if you have any questions.

—Terri Karls and Marilyn Montgomery, cochairs

FOR SALE

GAMMILL QUILTING MACHINE

Gammill Optimum Plus Quilting Machine

with 12' Table and Stitch Regulator

Laser light - Double Capacity Bobbins

Separate Bobbin Winder Included

\$8500 - Contact Monica Troy 630-918-2482

Anyone interested is welcome to come over to look at it. Thank You.

Vintage Books/Garage Sale

Hope everyone had a nice holiday! If you received any new books, or magazines, fabric, etc., and don't want them, please donate to the quilt guild. Also, any old items are appreciated.

—Ann Olson, Bobbie Butler, and Debbie Wesenberg

Hospitality



Thank you, Merci, Gracias, Danke Schoen, etc.

Our annual Holiday party was held on Thursday, December 12 with over 60 SCQG members in attendance. Great food was provided by Brookhaven Market (pork and dumplings with all the fixings), salads provided by Portillo's, and of course, the world-famous Portillo's chocolate cake for dessert. In addition, several members brought treats which were much appreciated.

Our sincere thanks goes out to Terri Karls, Janet Woratschek and (?) for ordering, picking up and delivering the food. That's a big job that does not go unnoticed. Thank you is also due to Kim Siwinski who shopped for the poinsettia plants, Sara Hochhauser for making the fabric squares under the plants, and for all the members who helped decorate and then clean up when the meeting was over. Kim Siwinski also did a great job of overseeing the planning, shopping and execution of all the moving parts of the evening. Barbara Morris, still recovering from back surgery and on pain meds, did a yeoman's job of pointing and barking orders.

The ornament exchange was a great success, except for Barbara Morris reading the "left, right" story way too fast. Good thing she takes criticism well!

If you missed this year's party, make sure you attend next year. It's a great evening of relaxation (sorely needed during this time of the year), and an opportunity to get to know your fellow SCQG-ers a little better.

GIVE YOURSELVES A PAT ON THE BACK

This year's charity project was gathering purses, totes and bags (new or gently used) and sanitary products. We took a CARLOAD of purses and products to the Family Shelter Services retail shop in Naperville, and they were *thrilled* to have our donations. The purses will be sold at their retail store to raise money for the shelter's needs, and shelter participants receive vouchers to shop at the retail outlet. The sanitary products will go directly to the shelter for the women's use. Thanks to all who gave so generously – you really made a difference.

Continued on the next page

Meeting Treat Schedule

January	G, H, I, J	Let it snow, let it snow
February	K, L, M	Be My Valentine
March	N, O, P, Q	Wearin' of the Green
April	R, S, T, U	April Showers
May	V, W, X, Y, Z	May Flowers

We LOVE all treats, whether homemade, store bought, sweet, savory, healthy or decadent! If you've missed your opportunity to bring treats, feel free to bring them whenever it's convenient for you. Leftover treats are sent to the workshops to help sustain the participants.

—Kim Siwinski and Barb Morris, Hospitality Co-Chairs

Change of Email Address—

Kathy Durochik
kdurochik@gmail.com

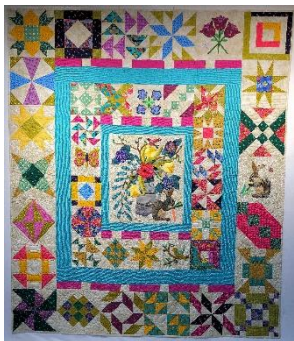
Penny Nichols
Apenny4urthts@gmail.com

Dianne Anderson
Stitchordi@gmail.com

Quilt Show 2020—

Sewn Together: Peace by Piece

Welcome to 2020!



Before we know it, the quilt show will be upon us. Lots to do to get ready! First and foremost- finish your quilts and get the entry forms filled out! Get your scraps and fat quarter of fabric together along with a new spool of thread for baskets and scrapalooza. Make your appraisal appointment

with Anne Zick. Coordinate with DeAnn Ellis for volunteer times and places. You can even start baking and freezing baked goods. Finish items for both the silent auction and the boutique. Be sure to sell your admission tickets and opportunity quilt tickets. Get the word out to let your friends know about this beautiful show and unique shopping opportunity! The quality of our speakers and meetings is dependent upon a successful show; let's give it our all!

—Claudia Moffat and Kim Siwinski, Co-chairs

Silent Auction— We need items for Silent Auction. Remember this time we are taking wall hangings, baby items, kitchen items, things for kids. You can make purses or bags. Do you knit—how about some socks or

hats and scarves. Be creative and get going since time is marching on and soon the Quilt Show will be here.

Please bring items to the meetings and once again Janet and I will be at the Program Table collecting your items.

We can't wait to see the items you'll be bringing to us. Remember this is your Guild and you are responsible for making it a success.

If you need help or have questions please contact Terri Karls at 630-257-6769 or karls256@att.net or Janet Woratschek at 773-339-7322 or woratschek@com-cast.net.

Baskets— Please start bringing items for the baskets or put together a basket with your bee, with friends, or by yourself. In order to have a successful Quilt Show we need each and every member to participate. We are asking everyone to bring a 1/4 yard of fabric and a spool of thread. Jan and I will be at the meeting collecting the items.

You can make baskets themed around kids, babies, men—sports, yard games etc., sewing, wine, food, quilting, or wool and hand stitching. Did you buy kits that you won't be putting together? I'm sure I can do a basket with them. If you bring in the items, Jan and I will put them together. If you build your own please include a list of what is in the basket and who it is from. Remember our Show is getting very close now, so please help.

—Terri Karls and Janet Woratschek, cochairs

Appraisals— Ever wonder how much your grandmother's antique quilt is worth? Are you proud of your recently made quilt and curious about its replacement value? There will be three certified quilt appraisers at the April show.

We are also looking for volunteers to act as hostesses in the appraisal room.

If you would like to have your piece appraised and/or are willing to volunteer, please sign up at the January meeting.

Happy New Year!

—Marie Dold and Anne Zick, Co-Chairs

Admission Tickets— Sell, sell, sell those tickets.

Remember, \$6 now but \$7 at the door.

—Sandy Byrnes

Boutique— Create items for our Unique Boutique! Sellers earn 90% of your sales price while our guild retains 10%. Items do not have to be sewn with a needle but do need to be 'quilty' in spirit. Examples are table runners, aprons, coasters, wall hangings, tote bags, baby items, etc. Check with Joan Chao or Pat Ciszewski about your potential items. Information sheets with details are available at the guild meeting.

Also, we are collecting plastic and paper shopping bags and gently used tissue paper to wrap up purchases. Drop them off at the Boutique table at the guild meeting. Thanks!

—Joan Chao and Pat Ciszewski, Boutique

Volunteers— CALLING ALL MEMBERS! VOLUNTEERS NEEDED!

Volunteers can make or break our quilt show! It's important to have enough people to cover all the committee needs so, at the January guild meeting, we will have a chart for you to sign up for your preferred volunteer time slots and positions!

Make sure you sign up early to get the slots you want!

—DeAnn Ellis

Quilt Show Entries— We will be at the back tables, waiting to accept your quilt entries for our quilt show in April. Entries will be accepted at both the January and February meetings. Only one form is needed and no pictures will be required. The entry form can be found online and on the last page of this patch dispatch. The quilt will require a label and must be brought to the show in a pillowcase. If you have any questions, we would be happy to answer them for you.

—Lois Flood 708-354-5754

Rachel Picek 708-548-1511 Co-chairs

Quilt Show Challenge—We hope that you are working away on your challenge quilts for our upcoming show. Please submit your entry on the general form which has been included in both the November and December newsletters. BE SURE TO NOTE THAT THIS IS A CHALLENGE QUILT ON YOUR ENTRY FORM. Include an explanation of the way this quilt relates to Carole King, if it is based on a song note the name of the song. All entries will be due by the February guild meeting. We will be at the January meeting and the Retreat if you have any questions. Happy Quilting!

—Linda Kennedy and
Louise Graff, CoChairs

Community Service

I had a very heartwarming experience last week that I would like to share with you.

I called Sarah, the activities director at Bethlehem Woods, and asked when I could deliver the quilts that I had received from the members of Salt Creek Quilt Guild. As many of you know, she had called churches in the area

asking for quilts for the assisted living area. Our pastor had called me, as we meet in our church for our workshops. The assisted living areas include approximately 40 patients, 75% of them are Alzheimer's patients. When I arrived at Bethlehem Woods with the quilts, I had my cart and was loading up the quilts that I brought, when Sarah came with her "small" cart and she took some of them to transport. She then asked me if I could help her distribute them. I agreed, and we began our "journey". I wish that all of you could have been with us. She announced to all of the recipients that they were from "Salt Creek Quilt Guild" and I was a representative from the group. So many looked at her and asked, "Is this really for me?" When she answered, "yes", the smiles on their faces brought joy to my heart. I received many heartfelt hugs that night, and left there with tears both in my eyes and heart.

I would like to thank each and every one of you that donated to this cause. I cannot list your names in fear that I would forget someone, but God knows. The true joy you brought to these patients will never be forgotten.

—Lois Flood



This Photo by Unknown Author is licensed under CC BY-NC-ND

Blue & White Quilts: 13 Remarkable Quilts with Timeless Appeal

Paperback: 96 pages
Publisher: That Patchwork Place (December 6, 2019)
Language: English
ISBN-10: 1683560396
ISBN-13: 978-1683560395
Martingale 2019



Thirteen quilts from famed designers and collectors include a mix of exciting new designs and sentimental favorites, and three antique treasures to remake using today's fabrics and techniques. From traditional Nine Patch and Album quilts to the pinnacle of patchwork, Tree of Life, enjoy spectacular blue & white quilts from:

Lissa Alexander . Lisa Bongean . Julie Hendricksen . Sherri McConnell . Camille Roskelley . Laurie Simpson . Helen Stubbings . Debbie Roberts . Jill Shaulis . Nancy Mahoney . Paula Barnes and Mary Ellen Robison

QUILT ENTRY FORM
SALT CREEK QUILT GUILD SHOW
ENTRY DEADLINE – January Meeting

Indicate Priority of this quilt if you are entering more than 1 quilt.

For office use only:
Quilt Location
 Row _____
 Number _____

Member's Name: _____ Phone: _____

E-mail address: _____

Quilt or Item Name: _____

Made by _____ Quilted by _____

Width (left to right) _____ inches Length (top to bottom) _____ inches

Hand pieced _____ Machine pieced _____ Hand appliquéd _____ Machine appliquéd _____

Hand Quilted _____ Machine Quilted _____ Home _____ Long armed _____

Original design _____ Pattern _____ (give details) _____

*Miscellaneous: *Garments, bags, 3-dimensional items, double-sided quilt, other* _____

If your quilt is part of a group, a bee, or a round robin, please list the names of **all** involved.

Entries must be submitted together.

**Express in the first person, any interesting facts about your quilt.
 Please limit to 25 words or less. (This may be edited for quilt placard).**

All quilts MUST have an attached label, sleeve, and must be in a pillowcase.

Disclaimer: I hereby release and forever discharge the Salt Creek Quilt Guild and/or its members from any liability due to loss or damage of quilts during the Quilt Show.

Signed: _____ Dated: _____



December Holiday Party

